

FREESTANDING INDUSTRIAL CONDOMINIUM

FOR LEASE

2197 Dunwin Drive, Mississauga

FOR MORE
INFORMATION
PLEASE CONTACT:

MELANIE KING
Sales Representative
905-624-4456 Ext. 203
mking@binswangerhectare.com



LOCATION
SIZE
OFFICE SIZE
SHIPPING
POWER
HEATING
CLEAR HEIGHT
ZONING
T.M.I.
ASKING RATE

Dundas / Erin Mills
4,737 sq.ft.
Approx. 20%
2 truck level doors
200 amps / 600 volts
Forced air gas
14'
E2-1, permitting a wide variety of uses
\$4.63 (2009)
\$5.25 net psf /yr.



Binswanger Hectare, Brokerage
1279 Matheson Blvd. E.
Mississauga, ON L4W 1R1
Tel 905-624-4455
Fax 905-624-4458
www.binswangerhectare.com

REGIONAL • NATIONAL •
INTERNATIONAL REAL ESTATE

REGIONAL OPERATIONS:

Atlanta, GA • Charlotte, NC • Chicago, IL •
Dallas, TX • Denver, CO • Detroit, MI • King of
Prussia, PA • Los Angeles, CA • Melville, NY •
Meriden, CT • Miami, FL • Minneapolis, MN •
Montreal, Quebec • Morristown, NJ • Nashville,
TN • Natick, MA • New York, NY • North
Haledon, NJ • Owings Mills, MD • Oxford, MS •
Philadelphia, PA • Phoenix, AZ • Tampa, FL •
Toledo, OH • Toronto, Ontario • Valencia, CA •
Vienna, VA

Bankok • Bogota • Buenos Aires • Caracas •
Copenhagen • Haarlem • Hamburg • Lima •
London • Manila • Mexico City • Mumbai •
Paris • San Juan • Santiago • Sao Paulo • Seoul •
Shanghai • Singapore • Tel Aviv • Tokyo •
Warsaw

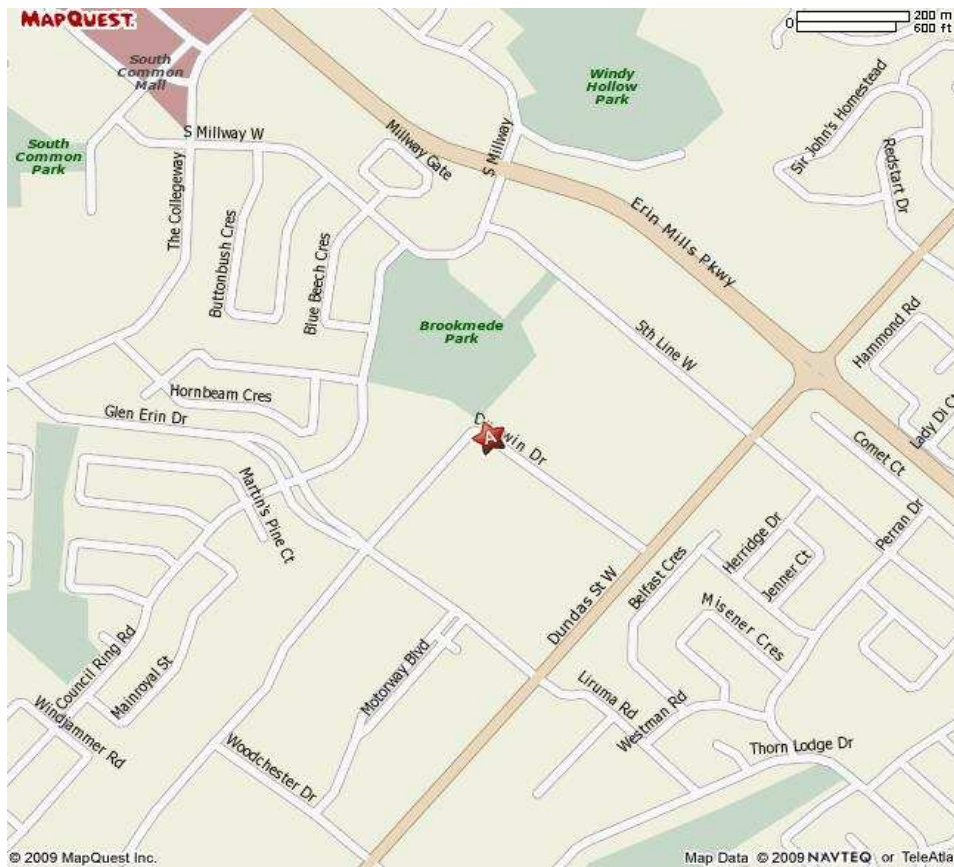
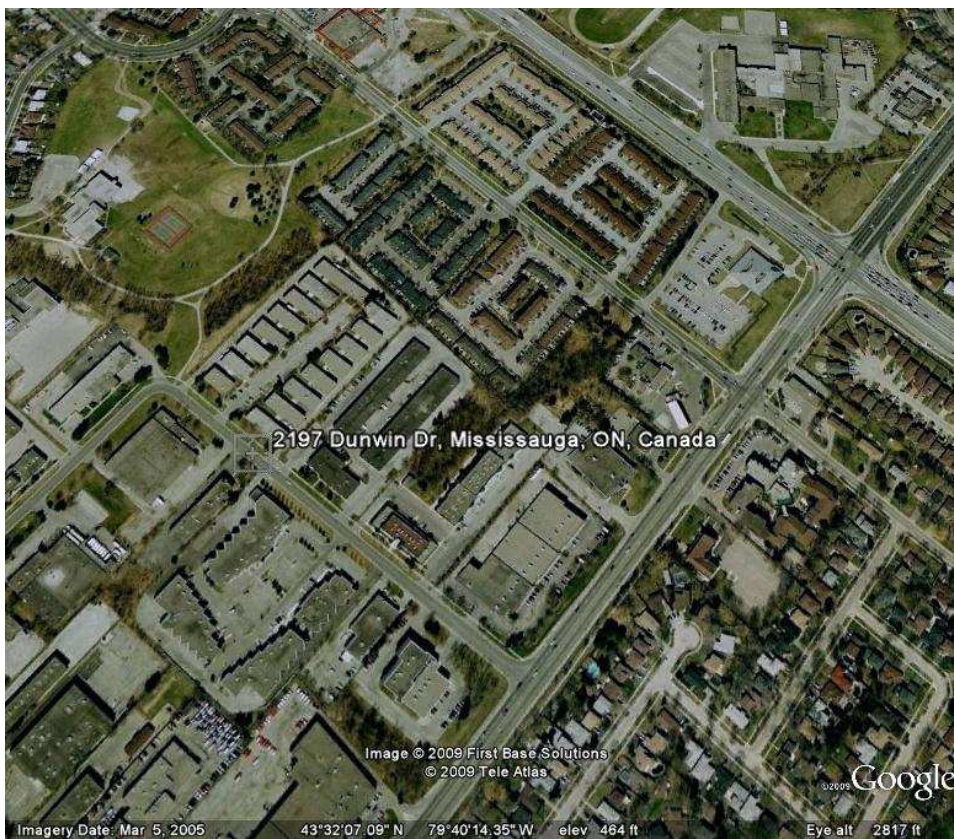
Over 150 Offices Worldwide www.binswanger.com

FEATURES

- Small freestanding condominium unit in quiet court setting
- Quick access to 400 series highways
- Variety of local amenities including transit, retail, restaurants
- Ideal for warehousing/distribution, manufacturing

The information contained herein is from sources deemed reliable but no warranty or representation is made as to the accuracy thereof and no liability may be imposed. This submission is made subject to prior sale, in price or terms, or withdrawal without notice. Other advisors should be consulted if desired, on matters related to this presentation.

2197 Dunwin Drive, Mississauga



2197 Dunwin Drive, Mississauga

