

## 220 ADVANCE BLVD., BRAMPTON, ON

FOR MORE  
INFORMATION  
PLEASE CONTACT:

**JIM JACOBSEN**  
Broker  
905-624-4455  
Ext. 220  
jjacobsen@binswangerhectare.com



LOCATION:	Dixie Road and Steeles Avenue
BUILDING SIZE:	18,026 Sq. Ft.
LOT DIMENSIONS:	Frontage 185 +/- feet x Depth 270 +/- feet
LOT SIZE:	1.38 Acres
PARKING:	Ample (76 spaces tbv)
SALE PRICE:	\$3,290,000.00
REALTY TAXES:	\$38,942.12 Annual (2009)
TENANT:	Public Company (Great Covenant) New 5YR Lease (Entire Building)
POSSESSION:	Immediate/TBA
COMMENTS:	* Precast Construction * Building Designed To Accommodate 3rd Level (TBV) * Additional parking can be created



Binswanger Hectare, Brokerage  
1279 Matheson Blvd. E.  
Mississauga, ON L4W 1R1  
Tel 905-624-4455  
Fax 905-624-4458

REGIONAL • NATIONAL •  
INTERNATIONAL REAL ESTATE

**REGIONAL OPERATIONS:**

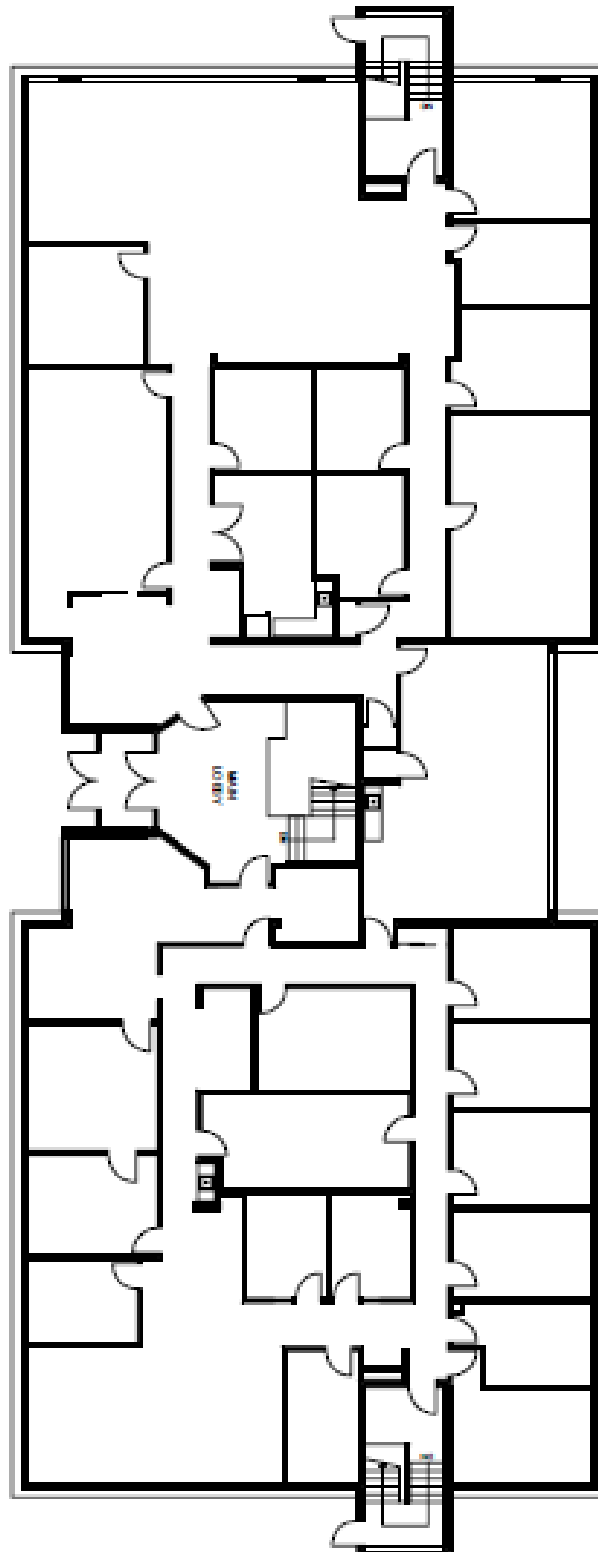
Atlanta, GA • Charlotte, NC • Chicago, IL •  
Dallas, TX • Denver, CO • Detroit, MI • King of  
Prussia, PA • Los Angeles, CA • Melville, NY •  
Meriden, CT • Miami, FL • Minneapolis, MN •  
Montreal, Quebec • Morristown, NJ • Nashville,  
TN • Natick, MA • New York, NY • North  
Haledon, NJ • Owings Mills, MD • Oxford, MS •  
Philadelphia, PA • Phoenix, AZ • Tampa, FL •  
Toledo, OH • Toronto, Ontario • Valencia, CA •  
Vienna, VA

Bankok • Bogota • Buenos Aires • Caracas •  
Copenhagen • Haarlem • Hamburg • Lima •  
London • Manila • Mexico City • Mumbai •  
Paris • San Juan • Santiago • Sao Paulo • Seoul •  
Shanghai • Singapore • Tel Aviv • Tokyo •  
Warsaw

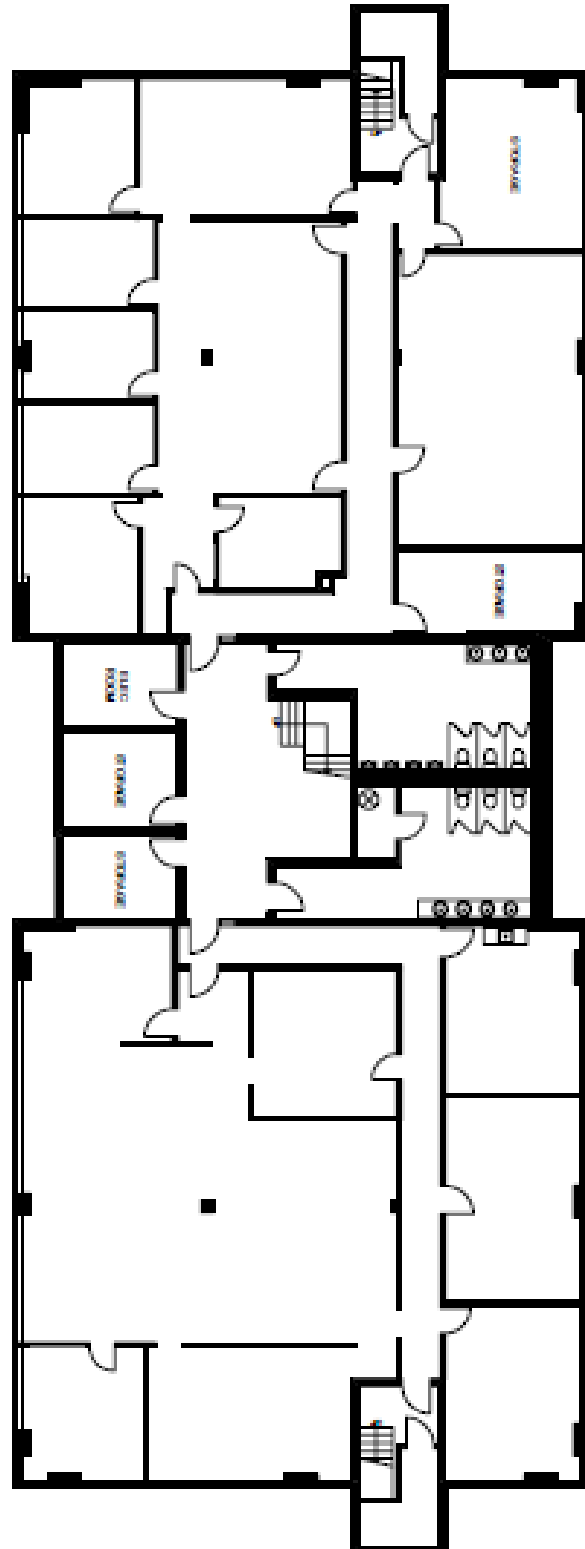
Over 150 Offices Worldwide [www.binswanger.com](http://www.binswanger.com)

The information contained herein is from sources deemed reliable but no warranty or representation is made as to the accuracy thereof and no liability may be imposed. This submission is made subject to prior sale, in price or terms, or withdrawal without notice. Other advisors should be consulted if desired, on matters related to this presentation.

## Office Layout Upper Level



## Office Layout Lower Level



# 220 ADVANCE BLVD., BRAMPTON, ON

## Site Plan

