

## 5985 Atlantic Drive #5-6, Mississauga

FOR MORE  
INFORMATION  
PLEASE CONTACT:

**Kevin Brennan, B. Comm  
Broker  
Senior Vice President  
905-624-4455 Ext. 214  
kbrennan@binswangerhectare.com**

**Jason Vance, Hon. B.A.  
Sales Representative  
905-624-4455 ext. 208  
jvance@binswangerhectare.com**



**Location:** Atlantic Drive / Britannia Rd. East

**Sizes Available:**

Unit	Sizes	Price (p.s.f)
5	4,250 sq. ft.	\$5.00
6	6,250 sq. ft.	\$5.00
5 - 6	10,500 sq. ft.	\$4.50



Binswanger Hectare, Brokerage  
1279 Matheson Blvd. E.  
Mississauga, ON L4W 1R1  
Tel 905-624-4455  
Fax 905-624-4458

REGIONAL • NATIONAL •  
INTERNATIONAL REAL ESTATE

**REGIONAL OPERATIONS:**

Atlanta, GA • Charlotte, NC • Chicago, IL •  
Dallas, TX • Denver, CO • Detroit, MI • King of  
Prussia, PA • Los Angeles, CA • Melville, NY •  
Meriden, CT • Miami, FL • Minneapolis, MN •  
Montreal, Quebec • Morristown, NJ • Nashville,  
TN • Natick, MA • New York, NY • North  
Haledon, NJ • Owings Mills, MD • Oxford, MS •  
Philadelphia, PA • Phoenix, AZ • Tampa, FL •  
Toledo, OH • Toronto, Ontario • Valencia, CA •  
Vienna, VA

Bankok • Bogota • Buenos Aires • Caracas •  
Copenhagen • Haarlem • Hamburg • Lima •  
London • Manila • Mexico City • Mumbai •  
Paris • San Juan • Santiago • Sao Paulo • Seoul •  
Shanghai • Singapore • Tel Aviv • Tokyo •  
Warsaw

Over 150 Offices Worldwide [www.binswanger.com](http://www.binswanger.com)

**Office:** 10%  
**T.M.I:** \$2.75 psf / 2010  
**Shipping:** 1 Truck Level door per unit (sawtooth shipping)  
**Clear Height:** 18' clear  
**Sprinklers:** Yes  
**Possession:** Immediate  
**Zoning:** E3 – Outside storage

**Comments:**

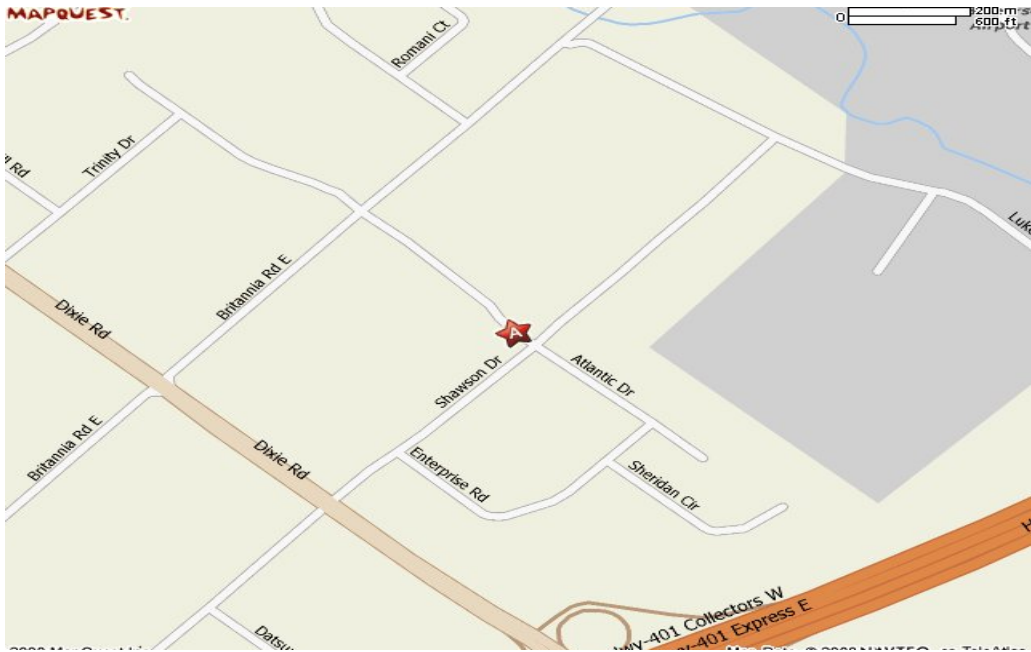
- \* Functional unit
- \* Low TMI
- \* Great location; close to Hwy. 401, 403, 410, 427 & Pearson International Airport
- \* Ideal for manufacturing

# 5985 Atlantic Drive #5-6, Mississauga

## AERIAL MAP

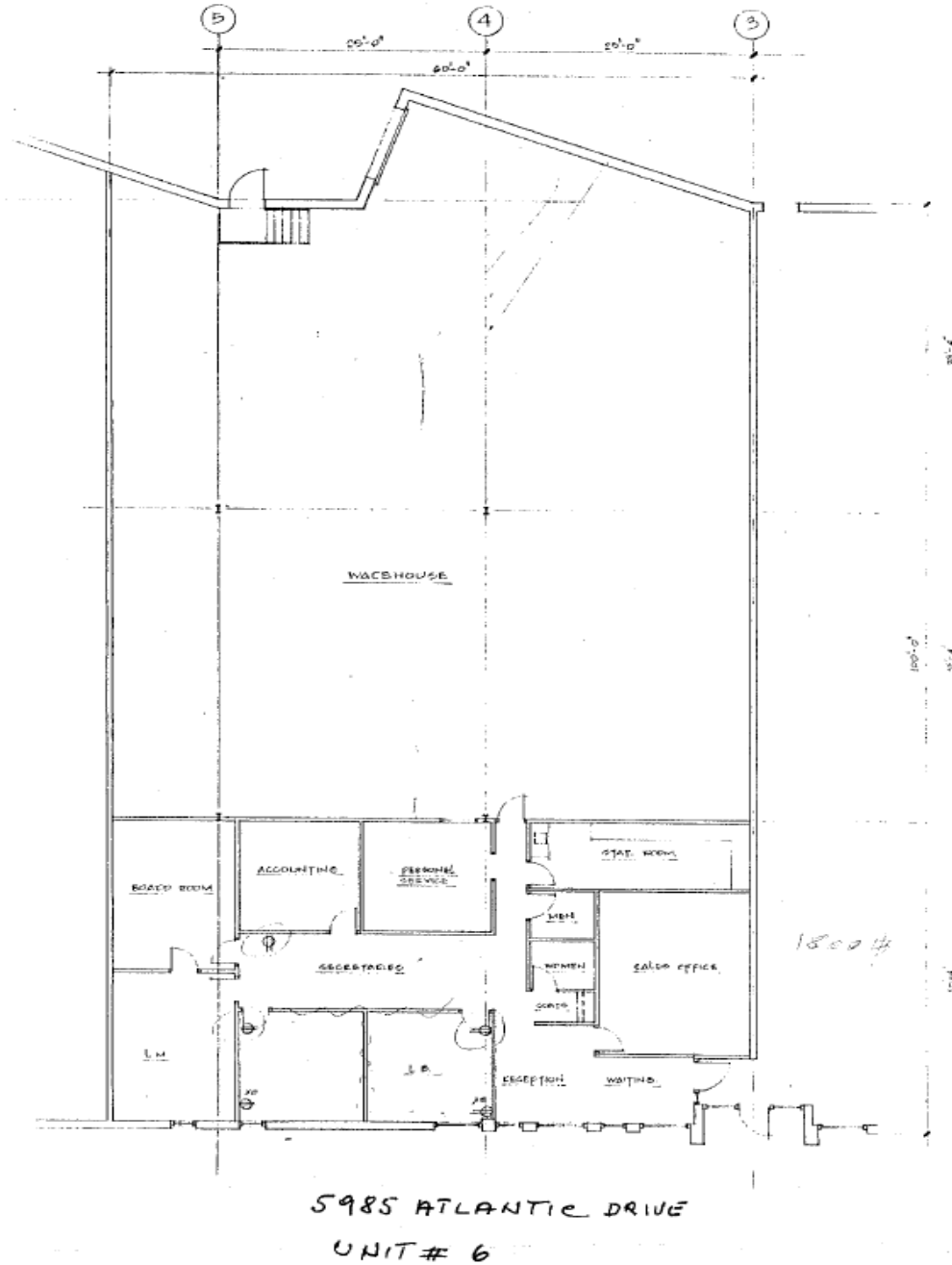


## LOCATION MAP



# 5985 Atlantic Drive #5-6, Mississauga

## LOCATION MAP



# 5985 Atlantic Drive #5-6, Mississauga

## SITE PLAN

