

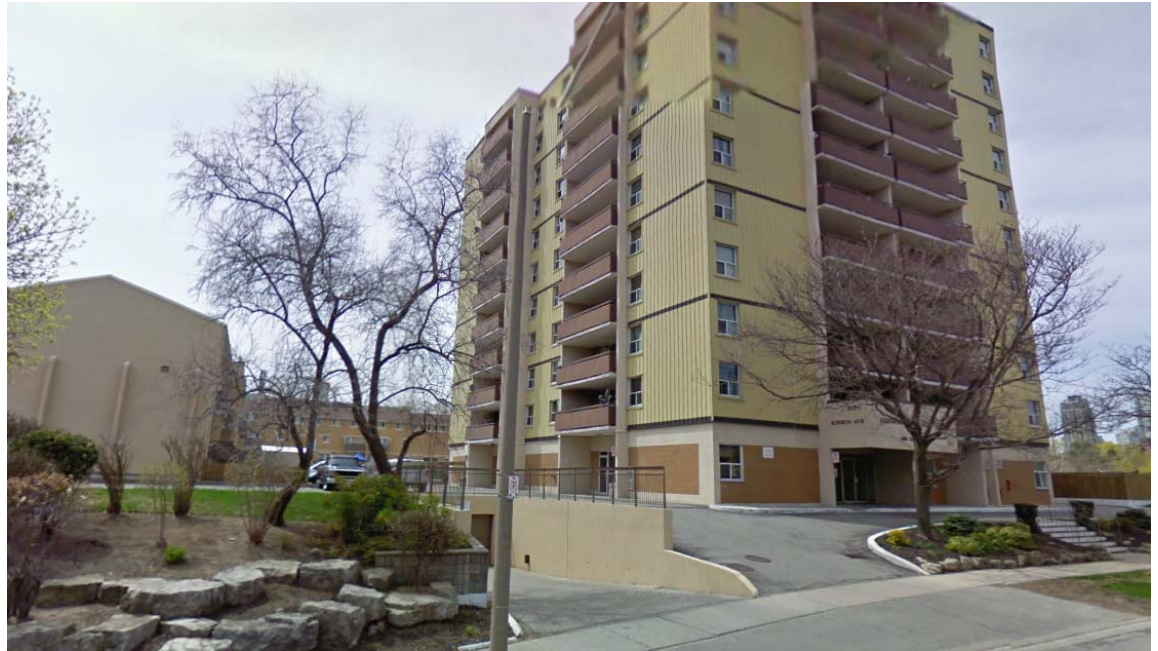
# UNIQUE GROUND FLOOR OPPORTUNITY

# FOR LEASE

## 3180 Kirwin Avenue, Mississauga

FOR MORE  
INFORMATION  
PLEASE CONTACT:

MELANIE KING  
Sales Representative  
905-624-4456 Ext. 203  
mking@binswangerhectare.com



Binswanger Hectare, Brokerage  
1279 Matheson Blvd. E.  
Mississauga, ON L4W 1R1  
Tel 905-624-4455  
Fax 905-624-4458

REGIONAL • NATIONAL •  
INTERNATIONAL REAL ESTATE

#### REGIONAL OPERATIONS:

Atlanta, GA • Charlotte, NC • Chicago, IL •  
Dallas, TX • Denver, CO • Detroit, MI • King of  
Prussia, PA • Los Angeles, CA • Melville, NY •  
Meriden, CT • Miami, FL • Minneapolis, MN •  
Montreal, Quebec • Morristown, NJ • Nashville,  
TN • Natick, MA • New York, NY • North  
Haledon, NJ • Owings Mills, MD • Oxford, MS •  
Philadelphia, PA • Phoenix, AZ • Tampa, FL •  
Toledo, OH • Toronto, Ontario • Valencia, CA •  
Vienna, VA

Bangkok • Bogota • Buenos Aires • Caracas •  
Copenhagen • Haarlem • Hamburg • Lima •  
London • Manila • Mexico City • Mumbai •  
Paris • San Juan • Santiago • Sao Paulo • Seoul •  
Shanghai • Singapore • Tel Aviv • Tokyo •  
Warsaw

Over 150 Offices Worldwide [www.binswanger.com](http://www.binswanger.com)

LOCATION  
SIZE  
ZONING  
LEASE RATE  
POSSESSION

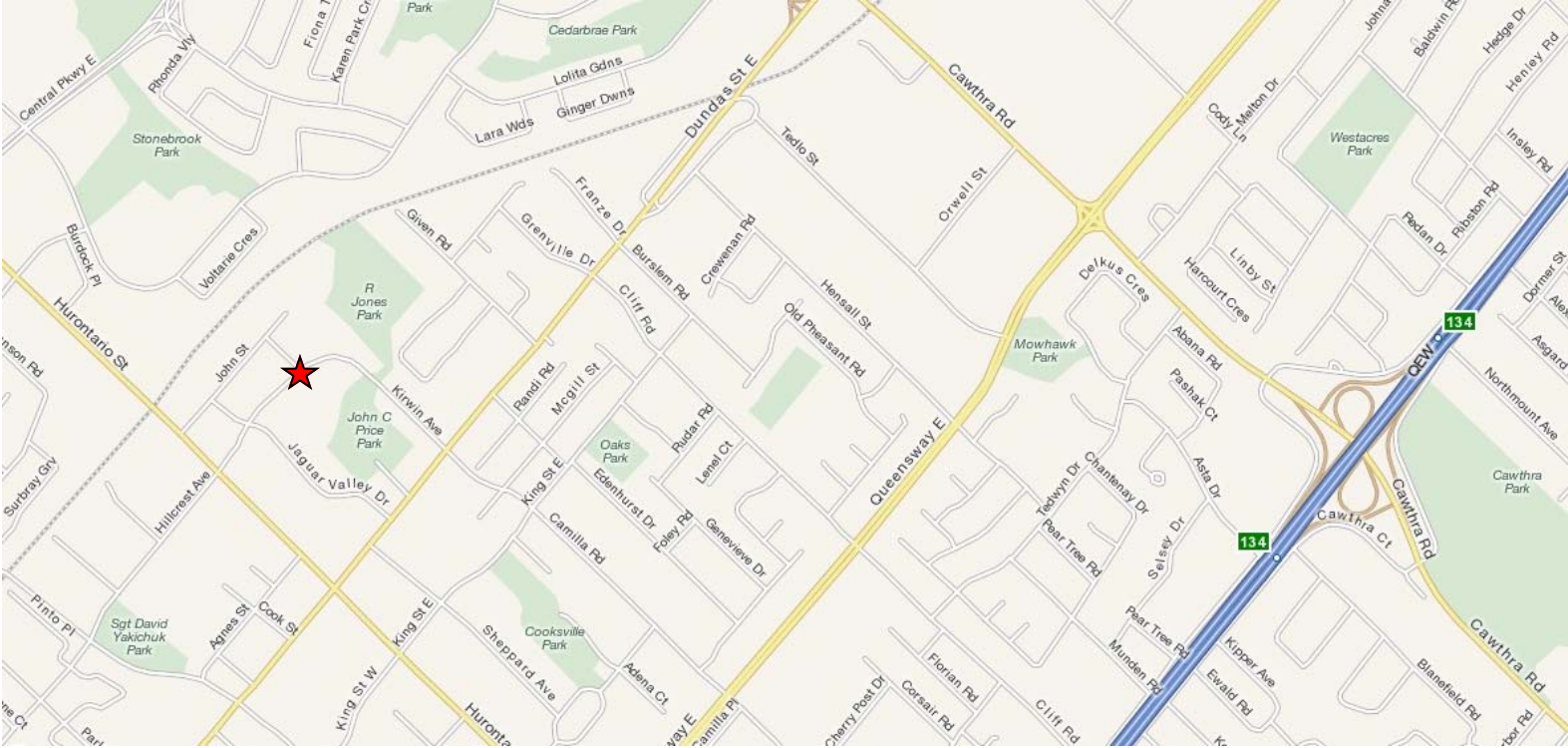
Dundas Street & Hurontario Street  
3,340 square feet  
RA3-18  
\$15 square foot gross  
October 1, 2011

### FEATURES

- Permitted uses include: daycare, retail store, personal service establishment, financial institution, office & medical office-restricted
- Gross lease includes TMI & utilities
- Existing playground
- Ample parking on site and along street
- Quick access to transit

The information contained herein is from sources deemed reliable but no warranty or representation is made as to the accuracy thereof and no liability may be imposed. This submission is made subject to prior sale, in price or terms, or withdrawal without notice. Other advisors should be consulted if desired, on matters related to this presentation.

# 3180 Kirwin Avenue, Mississauga



## FLOOR PLAN

