

FOR LEASE

324 TRADERS BLVD. MISSISSAUGA, ON

For further information
contact:

Kevin Brennan, B.Comm.
Broker
Senior Vice President
905-624-4455 ext. 214
kbrennan@hectare.com

Jason Vance, Hon B.A.
Sales Representative
905-624-4455 ext. 208
jvance@hectare.com

Ashley Falke
Sales Representative
905-624-4455 ext. 205
afalke@hectare.com

Hectare **GMAC**
Real Estate
BROKERAGE, independently owned and operated.

Commercial Division

1279 Matheson Blvd. E.
Mississauga, ON L4W 1R1
• Ph: (905) 624-4455
• Fax: (905) 624-4458
Web: www.hectare.com



Location:	324 Traders Blvd., Mississauga, ON (Hwy. 10 / Hwy. 401)
Lease Rate:	\$5.35 per sq. ft. net
Size:	27,507 sq. ft.
Office:	6,534 sq. ft. (on two floors)
Shipping Doors:	4 truck-level doors; 3 drive-in doors
Clear Height:	20'
Zoning:	E2
Power:	400 amps
Sprinklers:	Yes
Heating:	Gas Forced Air Open
Taxes:	\$2.40 (2008) (taxes and insurance)
Features:	<ul style="list-style-type: none">* Great location, close to the airport and highways 410, 401, 403, 427* Prestigious business park* Extra trailer parking* Warehouse in immaculate condition* Sealed Floors* Metal halide lighting* Great Shipping +/- 130 Feet Depth* Tenant to self maintain property

FOR LEASE

324 TRADERS BLVD. MISSISSAUGA, ON

For further information
contact:

**Kevin Brennan, B.Comm.
Broker**
Senior Vice President
905-624-4455 ext. 214
kbrennan@hectare.com

**Jason Vance, Hon B.A.
Sales Representative**
905-624-4455 ext. 208
jvance@hectare.com

**Ashley Falke
Sales Representative**
905-624-4455 ext. 205
afalke@hectare.com

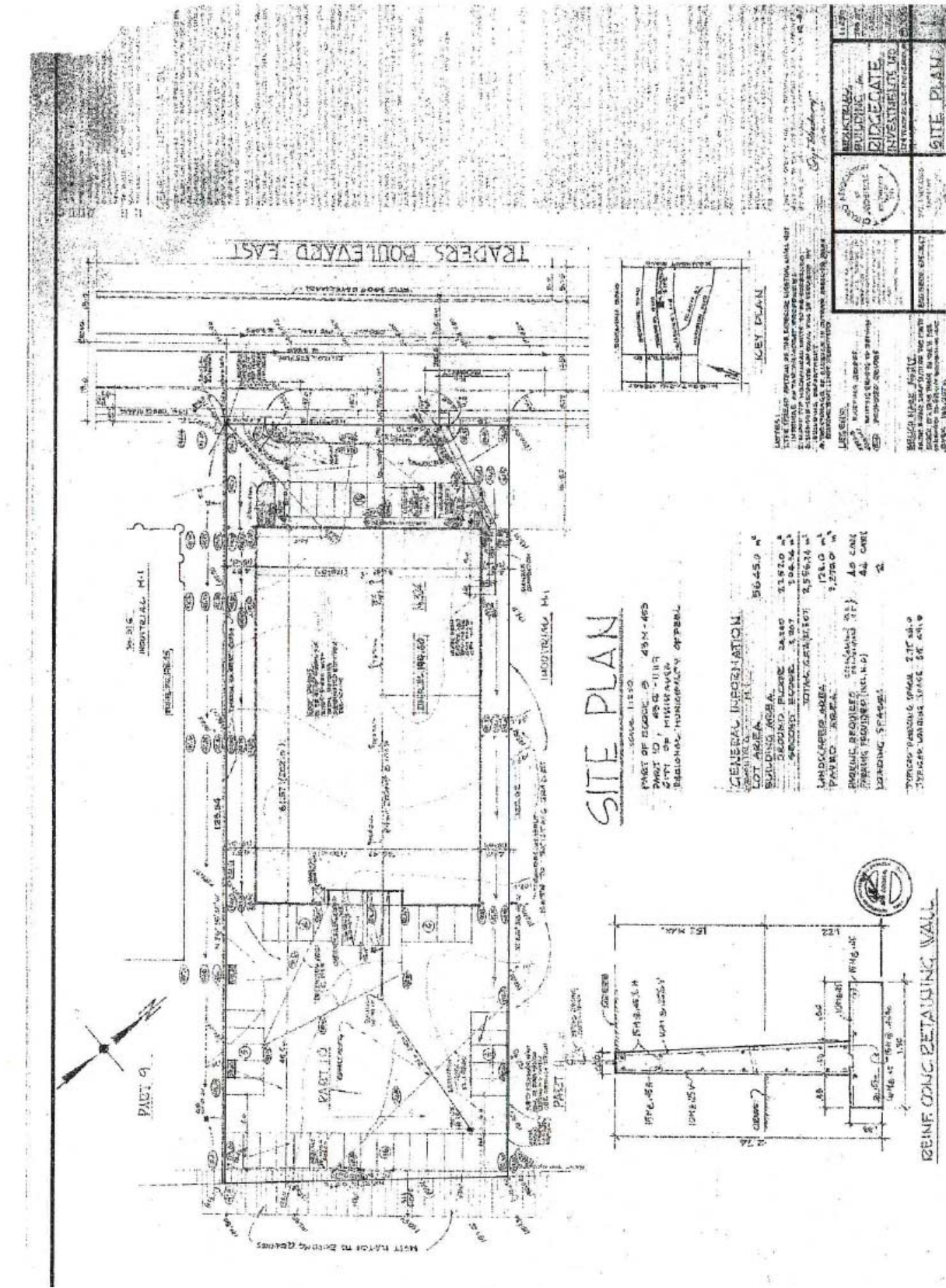


Commercial Division

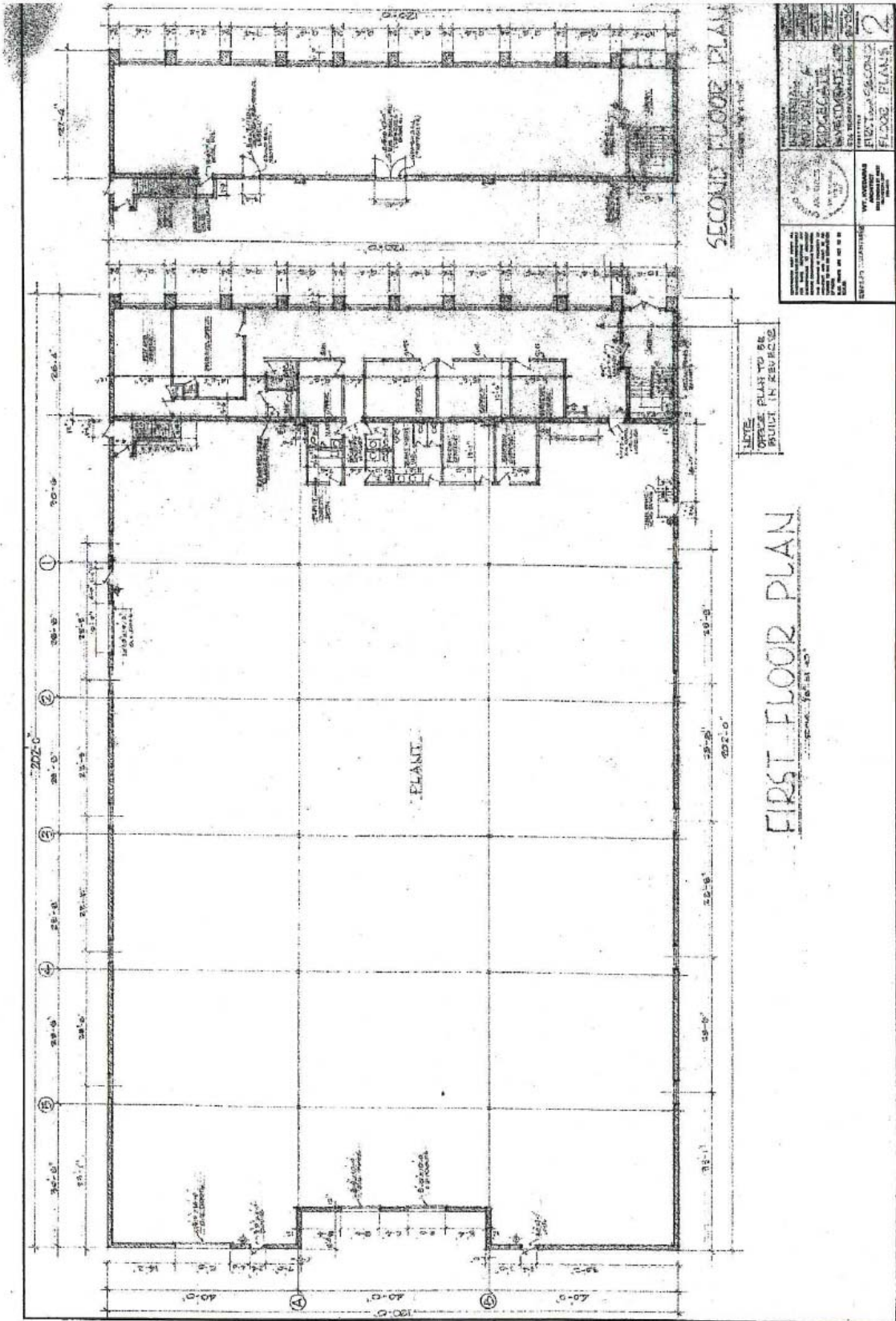
1279 Matheson Blvd. E.
Mississauga, ON L4W 1R1
• Ph: (905) 624-4455
• Fax: (905) 624-4458
Web: www.hectare.com



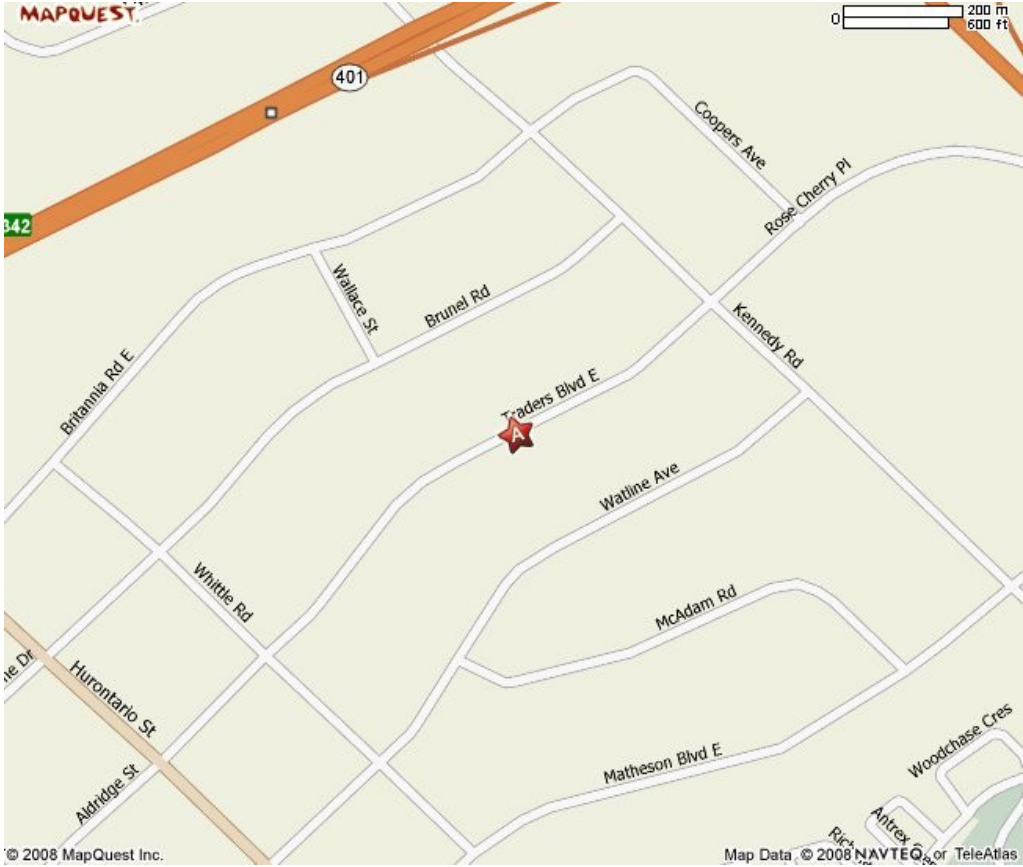
Site Plan



Floor Plan



Location Map



Aerial Map

